

About the Redevelopment

In June 2021 the NSW Government committed \$30 million to redevelop the Wentworth Health Service.

In July 2022 it was announced that the existing hospital site overlooking the Darling River was the preferred site for the redevelopment, a decision which received positive feedback. The Master Plan was also unveiled, showing how the site will accommodate the new health facility and the various clinical services that were identified in the Clinical Services Plan.

The master plan outlined the vision for the new facility on the banks of the Darling River. The new hospital will include an Inpatient Unit, Primary Ambulatory Care (Community Health Services), and an Urgent Care Centre. The master plan is used to develop a concept design and community feedback on the plan will be incorporated into the design where possible.

Master Plan Consultation

The Wentworth Health Service Redevelopment project team undertook master planning community consultation in July and August 2022. This included a number of information and consultation sessions with Wentworth Health Service staff, Two Rivers Health Council, Wentworth Shire Council, the local Aboriginal community and the wider Wentworth community. The project team also met with the community at the Wentworth Show on 27 and 28 August to provide information and answer questions about the redevelopment.

Community were also encouraged to send feedback to the project team via a dedicated project phone and email.

Following this consultation, the project team collated the feedback from all stakeholders, including staff and community. This important feedback will be used to inform the planning and design process as the project transitions into the next design phase known as **Concept Design**.

The community will be invited to give their feedback on the Concept Design.



Community Consultation Session July 2022



Walk on Country on the Redevelopment site July 2022



Wentworth Show Community Engagement August 2022

FOR MORE INFORMATION:

Email: HI-Wentworth@health.nsw.gov.au

Phone: (02) 8838 8889

Website: www.hinfra.health.nsw.gov.au

Consultation Feedback

During master plan consultation, the project team received a range of questions and feedback. The key themes received during these consultations are outlined below. Where possible these will be incorporated in future design phases.

HERE'S WHAT YOU TOLD US	RESPONSE
COMMITMENT AND BUDGET	
Concern about the project proceeding and rising construction costs.	The \$30 million to redevelop the Wentworth Health Service has been committed by the NSW government. The funding was included in the State Budget and planning for the project is underway. Planning includes consideration of construction costs and the full scope of the project can be delivered.
TIMING	
When will construction start and when will it be finished?	Construction is expected to start in mid-2023 with early works and will finish at the end of 2024.
INPATIENT ROOMS	
How many beds will there be and how will they be configured?	The new hospital will have 19 beds with rooms comprising of one or two beds, all with a dedicated bathroom. Some patients prefer to have company and 2-bed rooms mean families can be better accommodated.
URGENT CARE CENTRE	
The master plan shows an Urgent Care Centre – what is the difference between an Urgent Care Centre and an Emergency Department?	Mildura Base Hospital will continue to take patients who are triaged at 1-3 (high acuity) and Wentworth will manage patients who are triaged at 4-5 (lower acuity). The LHD will work with Ambulance NSW to determine whether to transport patients to Wentworth Health Service or Mildura Base Hospital depending on their medical condition. Further information will be provided to the community as the planning progresses.
AMBULATORY CARE	
How will the five Ambulatory Care spaces be used?	Spaces will be designed under Australian Health Facility Guidelines to ensure they are flexible and adaptable for various clinical services – for example, Allied Health and Mental Health.

FOR MORE INFORMATION:

Email: HI-Wentworth@health.nsw.gov.au

Phone: (02) 8838 8889

Website: www.hinfra.health.nsw.gov.au

HERE'S WHAT YOU TOLD US

RESPONSE

DIALYSIS SERVICES

Will dialysis services be provided?

Renal Dialysis is a specialised service, that is best supported through being co-located with acute hospital services. The existing services in Mildura and Broken Hill will continue to be the primary services for the region.

PARKING AND ACCESS

Ensure there is enough parking for patients, visitors and staff, close access to the entrance, and a drop off zone.

Provide shaded parking and consider visitors with large vehicles like campervans.

Good lighting and CCTV coverage and clear, flat pedestrian footpaths leading to the hospital from the carparking area should be included.

How is ambulance access and flow going to work?

A detailed traffic and parking assessment is underway to inform vehicular and pedestrian access as well as the number and location of staff, visitor and patient drop-off and longer stay parking spaces.

Car parking spaces will be designed to be safe and accessible.

We are also working with traffic consultants to ensure the design enables safe and efficient access for NSW Ambulance vehicles.

KITCHEN FACILITIES

Will there be on-site kitchen facilities?

Yes, patient meals will continue to be prepared on-site.

FOR MORE INFORMATION:

Email: HI-Wentworth@health.nsw.gov.au

Phone: (02) 8838 8889

Website: www.hinfra.health.nsw.gov.au

HERE'S WHAT YOU TOLD US

RESPONSE

CONNECTION TO COUNTRY AND CULTURE

How will you incorporate connection to Country in the design?

We are consulting with stakeholders to ensure the new hospital is designed in line with the NSW Government's Connection to Country Framework as a key priority.

How will the design reflect the significance of the Darling River which the hospital will overlook?

The Darling River is recognised as a significant and important element of the landscape for Aboriginal people and the Wentworth community. This has been a key consideration in the site selection and will also be reflected in the new hospital's design.

The design will include a pathway between the hospital and the river which staff, patients and visitors can access. This will be particularly important for patients receiving end-of-life care.

An outdoor Healing Centre incorporating indigenous planting and a yarning circle is being considered and we will continue to collaborate with local Aboriginal people about what this might look like.

ART AND HISTORY

Will artwork be used in the interior and exterior of the new hospital to aid healing?

The inclusion of artwork is integral to the design process as part of Health Infrastructure's Arts in Health program. This will include internal and external artwork such as photography, murals, and sculptures which will contribute to the health and wellbeing of patients, visitors and staff.

How will you ensure the history of the old hospital is captured?

The local community and artists will be engaged to inform the selection of artwork for the new hospital. A photo archive of the existing hospital will be created and significant heritage or historical elements will be retained where possible.

We are working with the community to capture the history of the existing hospital which can be shared through photography and art in mural and heritage walls and the display of memorabilia in the new hospital.

THE OUTDOOR SPACE AND LANDSCAPING

How will landscaping be incorporated into the design to contribute to the healing process for patients?

Landscaping is an important part of the design and a landscape plan will be developed by the Landscape Architect.

Plants suitable to the climate and soil will be used. We are consulting with local community, including the Aboriginal community, to learn what local flora should be planted, including native and traditional bush tucker plants.

What sort of plants will be included?

FOR MORE INFORMATION:

Email: HI-Wentworth@health.nsw.gov.au

Phone: (02) 8838 8889

Website: www.hinfra.health.nsw.gov.au

HERE'S WHAT YOU TOLD US

RESPONSE

STAKEHOLDER CONSULTATION

Why are you consulting at such a late stage in the project – hasn't everything already been decided?

Stakeholder consultation is an important part of the planning process as it supports informed decision making. Consultation commenced with the Clinical Services Plan, which was led by the LHD in late 2021 and through to the Master Plan. Consultation will continue through out all phases of the project.

It is important to consult with local Aboriginal people and understand there are multiple groups within the Wentworth Shire.

Health Infrastructure refers to the Government Architect NSW *Connecting with Country Framework* to ensure we respectfully collaborate and consult with local Aboriginal people and are guided by their knowledge in the design and planning of our projects.

We will continue to consult with the various local Aboriginal groups in the Wentworth region through an Aboriginal engagement framework which includes focus groups, Walk on Country events and an Aboriginal Reference Group.

WORKFORCE

How will you build the workforce to ensure there are sufficient staff to provide services in the new facility?

The Far West Local Health District is developing a Workforce Plan for the new Wentworth Health Service which will align with the Clinical Services Plan.

This includes continuing to grow and maintain partnerships for student-based traineeships to build the youth workforce as well as the establishment of partnership with two tertiary organisations that will be based in the Wentworth district to deliver health service training courses.

What staff accommodation will be available?

Additional staff accommodation will be provided as part of the redevelopment. This includes suitable accommodation for young families.

What are the next steps for the project?

Following Master Planning consultation, the project team collated all feedback from staff and community. This important feedback was used to inform the planning and design process as the project transitioned into the next design phase known as Concept Design.

Engagement will continue with the local community, local traditional knowledge holders and staff to ensure the health service design is a safe and welcoming environment for all who visit.

FOR MORE INFORMATION:

Email: HI-Wentworth@health.nsw.gov.au

Phone: (02) 8838 8889

Website: www.hinfra.health.nsw.gov.au

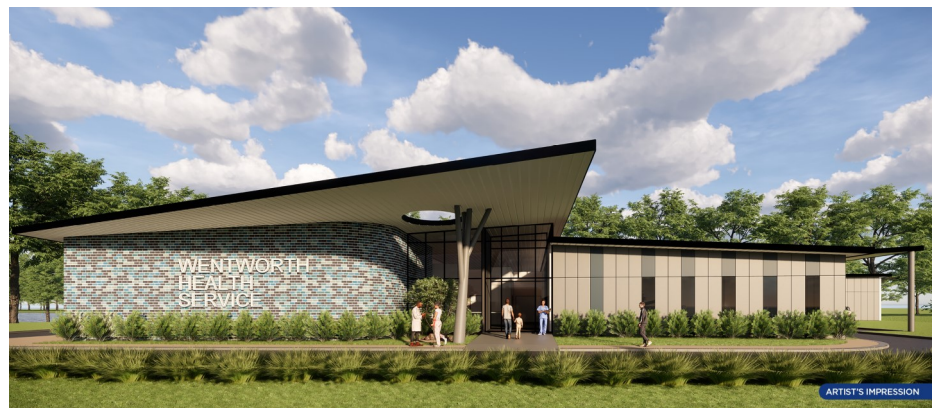
Concept Design

Feedback from the master planning consultation has been used to inform the planning and design process as the project transitions into the next design phase known as Concept Design.

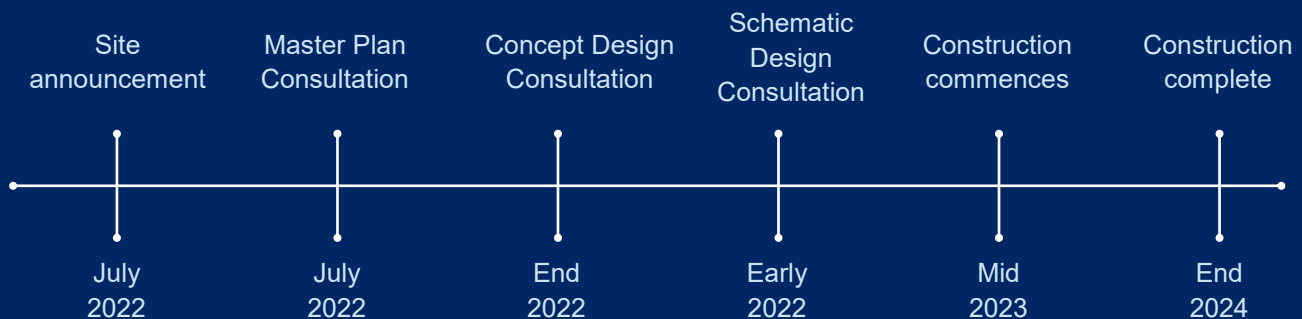
The draft concept design has now been released, giving the Wentworth community the opportunity to see what the new facility might look like.

Engagement will continue with the local community, local traditional knowledge holders and staff to ensure the health service design is a safe and welcoming environment for all who visit.

This includes stakeholder consultation sessions in early November 2022.



Wentworth Health Service Redevelopment project timeline



Project Timeline is an estimate only and is subject to change

FOR MORE INFORMATION:

Email: HI-Wentworth@health.nsw.gov.au

Phone: (02) 8838 8889

Website: www.hinfra.health.nsw.gov.au