

Project Update

Wentworth Health Service Redevelopment

November 2024



Aerial view of the finished structure

Another milestone for new Wentworth Hospital construction

The \$30 million Wentworth Health Service Redevelopment has reached another significant milestone, with the structure of the building now complete.

The 'topping out' of the building is the latest construction milestone and includes the installation of the wall and roof framing.

With the structural elements complete, hospital staff and the Wentworth community can now see the shape and design of their new hospital start to come to life. The internal fit-out, services installation and exterior works will now progress.

Boost to local economy

The construction has been a major boost to the local economy with the employment of local contractors and

subcontractors. Almost 200 construction workers and tradespeople have been inducted on the site, with the redevelopment also providing great opportunities to train over 15 apprentices to date.



Gert Halbgebauer (Health Infrastructure) and Daniel Tooth (HPAC) on site at the rear of the new building

Special visitors to site

Representatives of the Far West Local Health District (FWLHD) Board and Executive Leadership Team travelled to Wentworth in early October to check out the progress on construction of the redevelopment.

Board Chair, Sally Pearce, Board Member, Jason Masters, Chief Executive, Brad Astill, General Manager Remote Health Services, Denise McCallum, Director Aboriginal Health and Community Relations, Corina Kemp, and Two Rivers Health Council Member, Stephen Hegedeus completed a tour of the site with construction contractor HPAC as part of the Board's remote site visit to Balranald, Buronga and Wentworth.

The Wentworth site tour was a highlight of the remote visit, with the Board astounded by the scale and quality of the new building.

The Two Rivers Health Council also had the opportunity to take a tour of the site when they held their October meeting at Wentworth Hospital. The Health Council members were joined by FWLHD General Manager Remote Health Services, Denise McCallum, Health Service Manager Tim O'Neill, and HPAC site managers for an in-depth tour of the building.

Chair of the Two Rivers Health Council Lynn Prichard said the building is as envisaged, straight off the plan.

“We were pleasantly surprised at the size of the rooms when walking through and the site manager Daniel was very informative and explained some of the more technical info.”

“By the time we finished the tour we were all quite excited for our community,” Lynn said.



Almost

200

construction workers and tradespeople have been inducted on the site

Take 5 with Lachlan Lavery, Redevelopment Change Manager, Far West Local Health District

What does your job involve?

In my role as the Redevelopment Change Manager, I am responsible for overseeing and implementing change management strategies to support the development of the new Wentworth Health Service. This involves collaborating with internal and external stakeholders to develop and manage change plans that ensure smooth transitions and sustainability of the new building.

How involved are you in the delivery of the Wentworth Health Service Redevelopment?

My involvement in the Wentworth Redevelopment involves engaging with staff and other stakeholders to ensure that the workforce and community are as ready as possible to operate and utilise the new service to their highest capabilities.

This has included ensuring staff are given the right resources to operate new services, that they are comfortable to use the new environment, identifying and addressing risks and fostering a collaborative environment.

All to deliver excellent healthcare to our patients, families and carers as well as curating a positive and supportive workplace for our staff.

What's been your favourite thing about being involved with the project so far?

My favourite thing about working on the project so far has been the people. From staff within the existing facility, to the builders, project managers and the community. Everyone has been so welcoming and excited to see not only this new facility be delivered, but everyone putting in the extra effort to make sure that when its ready, it thrives!

What are the challenges in a project like this from your perspective?

With a project as big as this there are always challenges, the benefit of this project is that everyone is more than willing to collaborate to overcome them! We have clearly defined our goal and are all working together to make sure we meet it. Not only this, but being relatively new to the district, the community and my fellow colleagues have been incredibly welcoming and ensured that I am able to apply my skills to such a unique and beautiful area of the state / country.



What do you think will be the main benefits of redevelopment?

I think the main benefit is that the facility will meet the level of professionalism and drive that is already instilled within the people that work there. Providing a beautiful and peaceful place for people to receive care to match the quality of what the workers already bring.

I am incredibly excited to see the project come together and share the success of this tremendous achievement with the community!

Hopefully they enjoy utilising the space as much as I have enjoyed working on it.

Next steps

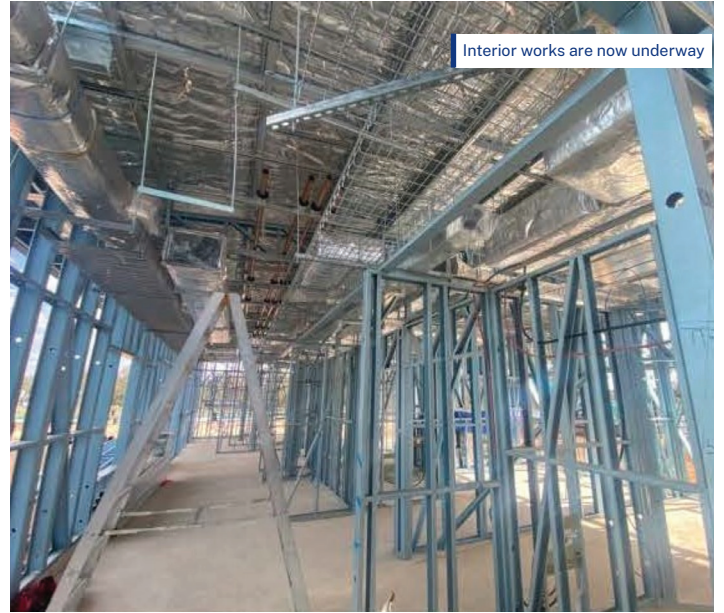
Now that the structural framework of the new hospital is complete, much of the construction focus has shifted to internal works, including waterproofing and 'roughing-in', which is the establishment of power and water lines ready for connection.

Civil works and the installation of mechanical services and guttering are also underway.

Planning for the Furniture Fittings and Equipment (FFE) and Information and Communications Technology (ICT) elements of the redevelopment are taking place at the same time as the construction.

The current hospital remains fully operational as the main works progress and every effort is being made to minimise disruption to staff, patients and visitors.

Construction is expected to be completed in 2025.



About the redevelopment

The NSW Government has committed \$30 million to providing comprehensive, accessible, culturally welcoming and consumer friendly health care services to support the needs of the entire Wentworth community.

The new Wentworth Health Service includes:

- A 19-bed Inpatient Unit
- Primary Ambulatory Care (Community Health Services)
- A new Urgent Care Centre
- A palliative care suite, which includes an inpatient room with a private terrace and an adjacent family lounge with views to the river
- A dedicated space for families which opens to a central, shared courtyard
- A gym with access to an outdoor courtyard
- Outdoor spaces and landscaping, including a Yarning Circle and native plants



Health Infrastructure, Far West Local Health District and Wentworth Health Service acknowledges the Traditional Custodians on whose lands the redevelopment project stands and pays respect to the peoples of the Barkindji Nation, the Traditional Owners of this land.

For more information

T: (02) 8838 8889

E: HI-Wentworth@health.nsw.gov.au

W: wentworthredevelopment.health.nsw.gov.au